

VICINITY MAP
NOT TO SCALE

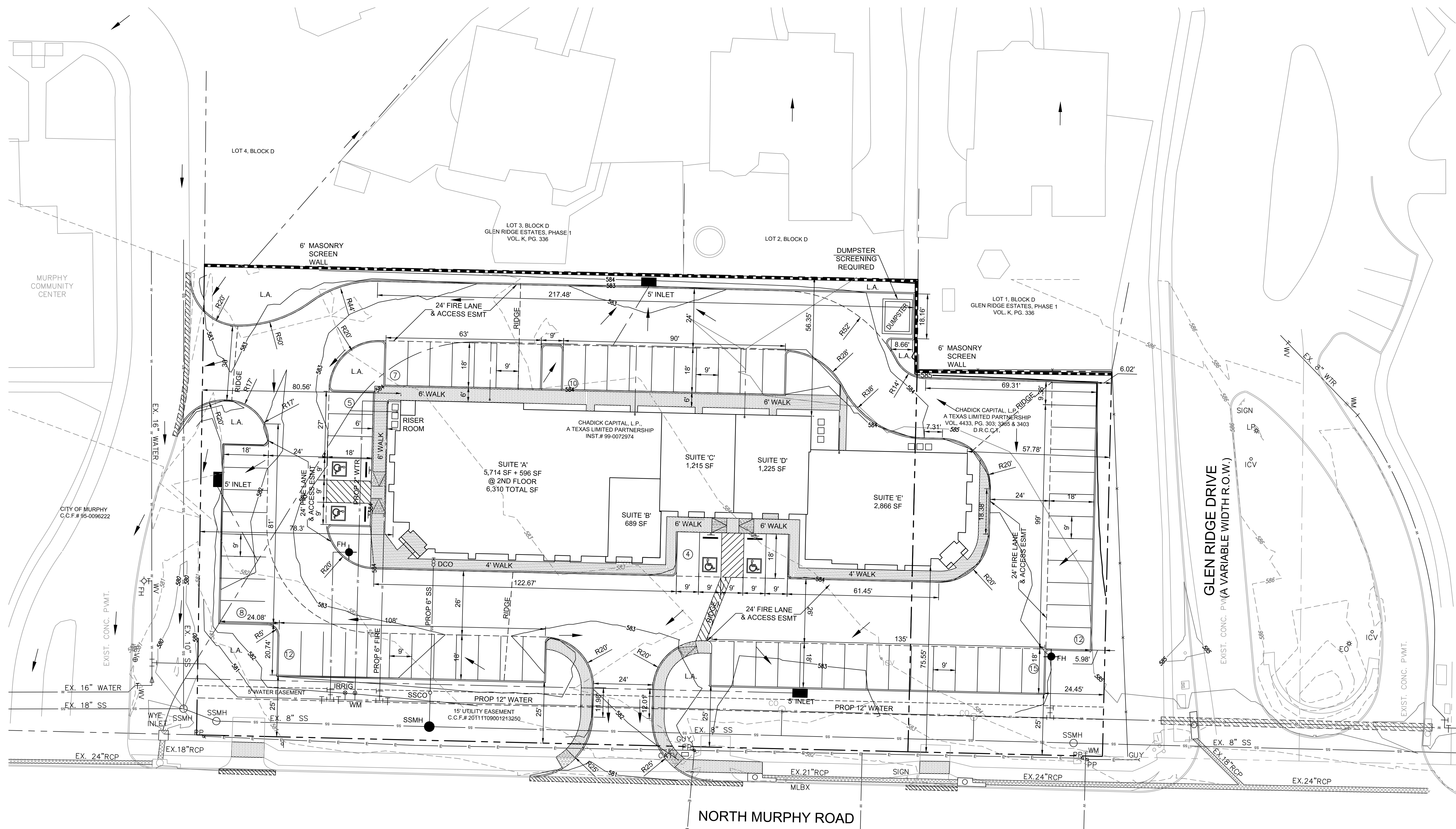
LEGEND

- F.H. FIRE HYDRANT
- X SET CHISELED "X" SET
- F.X. CHISELED "X" FOUND
- F.I.R. IRON ROD FOUND (SIZE AS NOTED)
- S.I.R. IRON ROD SET (SIZE AS NOTED)
- P.P. OVERHEAD UTILITY POLE W/ GUY
- PP UNDERGROUND ELECTRIC OR TELEPHONE
- L.P. LIGHT POLE
- SSMH SANITARY SEWER MANHOLE
- C.G. SAN. SWR. CLEAN OUT
- G.V. GAS VALVE
- W.V. WATER VALVE
- T2 TREE
- MH MANHOLE (TYPE AS NOTED)
- S.B. TRAFFIC SIGNAL BOX
- TRANS. ELECTRIC TRANSFORMER BOX
- TOWER ELECTRIC TRANSMISSION STEEL TOWER
- CABLE UNDERGROUND CABLE MARKER
- SIGN

- L.A. PROP. LANDSCAPE AREAS
- SS EXIST. STORM SEWER
- SS EXIST. SANITARY SEWER
- 8" W EXIST. WATER
- GAS EXIST. GAS
- SS PROP. SANITARY SEWER
- W PROP. WATER
- PROP. STORM SEWER

SITE DATA

- BUILDING 1
 BUILDING SF 12,325 TOTAL
 BUILDING COVERAGE: 33%
 BUILDING HEIGHT 25'-7" FT.
- PARKING REQUIRED
 MEDICAL OFFICE STE. A
 1:150 SF (6,310 SF), 42 SPACES
- PROFESSIONAL OFFICES
 STE. B, C, D & E
 1:200 SF (6,015 SF), 30 SPACES
- TOTAL PROVIDED - 73 SPACES
 TOTAL REQUIRED - 72 (4 HC SPACES)



SITE PLAN
ANDERSON MEDICAL-PROFESSIONAL OFFICES
 1.55 ACRE TRACT
 GEORGE H. PEGUES, ABSTRACT NO. 699
 CITY OF MURPHY, COLLIN COUNTY, TEXAS

OWNER:
ANDERSON IHL, LLC
 LUKE ANDERSON
 130 W BALLARD AVE
 WYLIE, TEXAS 75098

BENCHMARK:
 X CUT ON TOP OF INLET, WEST SIDE OF MURPHY ROAD, NORTH CR
 OF DRIVEWAY TO MURPHY RECREATION CENTER
 ELEV. 580.21



ENGINEERING / PROJECT MANAGEMENT /
 CONSTRUCTION SERVICES - FIRM REG. #F-001145
 201 WINDCO CIR, STE 200, WYLIE, TX 75098
 972-941-8400 FAX: 972-941-8401 WWW.ECDLP.COM

REVISIONS:	

"THIS DOCUMENT IS RELEASED FOR THE PURPOSE OF INTERIM REVIEW
 ON THE AUTHORITY OF THE INTERESTED PARTIES.
 IT IS NOT TO BE USED FOR CONSTRUCTION, BIDDING, PERMIT PURPOSES."

SITE PLAN
ANDERSON MEDICAL PROFESSIONAL OFFICES
CITY OF MURPHY
COLLIN COUNTY TEXAS

SHEET

 OF